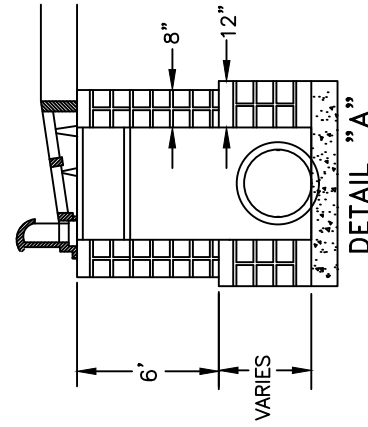
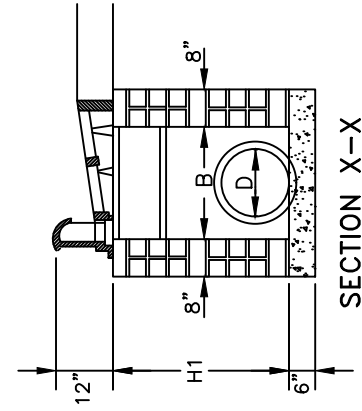
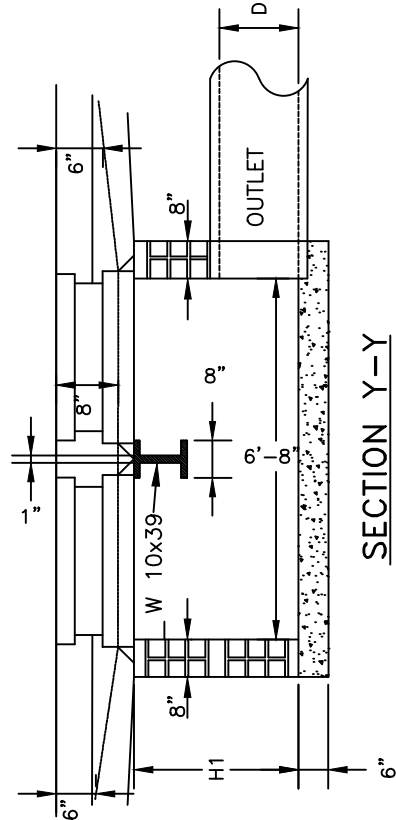
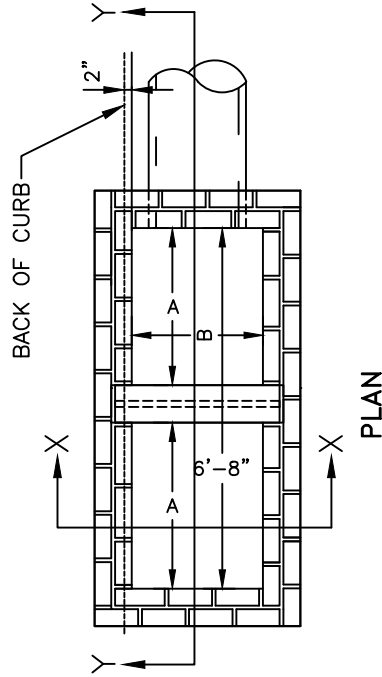


**DIMENSIONS OF BOX AND PIPE**

PIPE D	SPAN A	WIDTH B	HEIGHT MIN. H1	W 10 LENGTH
15"	3'-0"	2'-4"	2'-6"	2'-10"
18"	3'-0"	2'-4"	2'-10"	2'-10"
24"	3'-0"	2'-4"	3'-4"	2'-10"

**GENERAL NOTES:**

1. ALL CONCRETE TO BE 3600 PSI MIN. COMPRESSIVE STRENGTH.
2. MORTAR JOINTS SHOULD BE BETWEEN 3/8" AND 5/8" THICK.
3. ALL CATCH BASINS OVER 3'-6" IN DEPTH TO BE PROVIDED WITH STEPS AS DEFINED IN THE MATERIALS SECTION OF THE STANDARDS.
4. CONCRETE BRICK MAY BE USED IN LIEU OF HARD COMMON CLAY BRICK. JUMBO BRICK WILL BE PERMITTED.
5. FOR MANHOLE DEPTH OF 8'-0" OR LESS USE 8" WALL FOR MANHOLE DEPTH OVER 8'-0" USE 8" FROM TOP OF WALL AND 12" FOR REMAINING DEPTH. (SEE DETAIL "A" THIS SHEET)
6. FOR FRAME AND GRATE DETAIL SEE NCDOT STANDARD 840.03
7. ALL PIPE IN STORM DRAIN STRUCTURE SHALL BE STRUCK EVEN WITH THE INSIDE WALL, GROUTED AND BRUSHED SMOOTH.
8. WEEP HOLE(S) SHALL BE PLACED IN BACK WALL. A STONE DRAIN CONSISTING OF 1 (ONE) CUBIC FOOT OF NUMBER 78M STONE CONTAINED IN A BAG OF POROUS FABRIC SHALL BE PLACED AT EACH WEEP HOLE.
9. WHERE 2'-6" CURB AND GUTTER IS USED, CATCH BASINS MAY BE LOCATED AT THE END OF A RADIUS.
10. SEE NCDOT STD. NO. 840.01 FOR FURTHER INFORMATION.



**TOWN OF MOORESVILLE**

STANDARD DETAIL

STORM DRAINAGE  
BRICK DOUBLE CATCH BASIN  
15" THRU 24" PIPE

January 2009  
Revision 1

NTS

D - 1.0